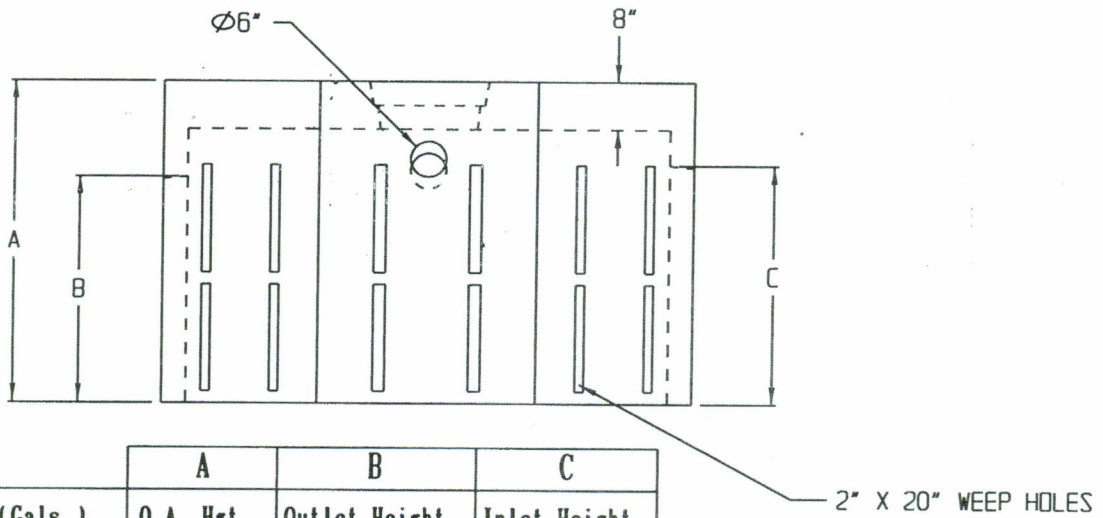
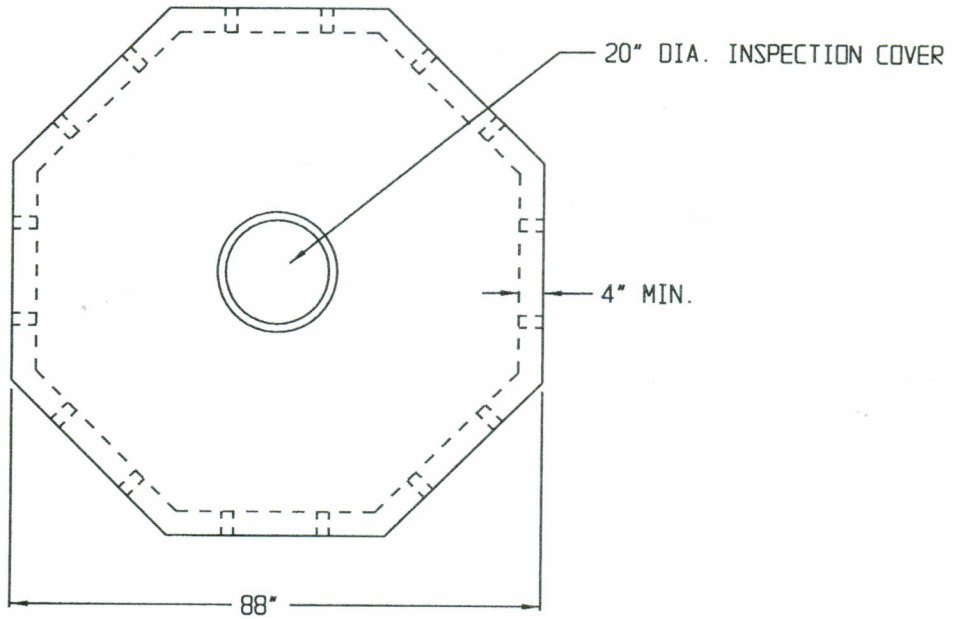


8' OCTAGON DRYWELL H-20



Dimension	Capacity (Gals.)	A	B	C
8 x 4	1540	O.A. Hgt. 54"	Outlet Height 38"	Inlet Height 40"
8 x 8	3080	102"	86"	88"
8 x 12	4620	150"	134"	136"

SPECIFICATIONS:

- * Concrete Minimum Compressive Strength-4,000 PSI @ 28 days.
- * Steel Reinforcement:
 - #4 Deformed Bar (Gr. 60) ASTM A-615, or equal.
- * Fibre Mesh Reinforced ASTM C-1116: Euclid Tuf-Strand, or equal @ a Rate of 3.33 lbs/cy.
- * Approximate Weight: Top Section With Cast-In Lid 7,700 lbs., Bottom Section 4,500 lbs.



2 COMMERCE DRIVE PO BOX 5133, BROOKFIELD, CT 06804
 PHONE: 203 775-0230 FAX: 203 740-2059 WWW.EASTERNPRECAST.COM

PROJECT			
TITLE			
DRAWN BY Brett B.		DATE 5-01-05	
SCALE	REF. CHART	DWG. NO.	DW8OCT
SHEET	1 OF 1	REV.	C