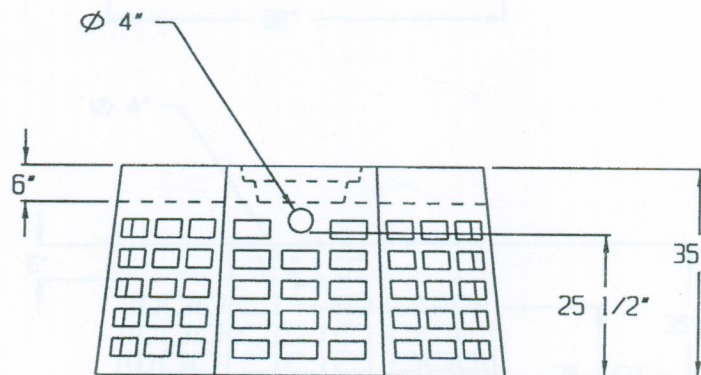
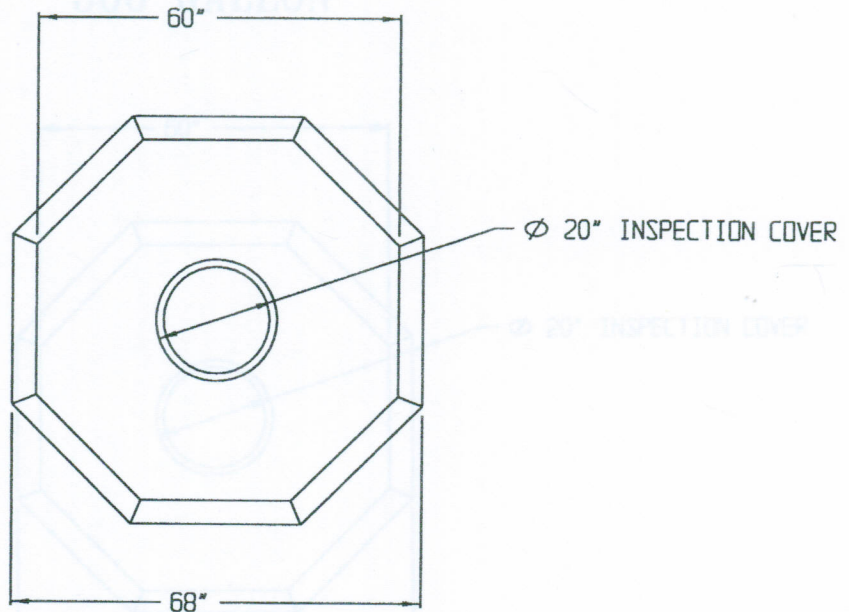


PRECAST DRY WELL, DW3

PRECAST DRY WELL, DW3
500 GALLON



NOTE:

MIN. WALL THICKNESS - 3"

SPECIFICATIONS:

- * Concrete Minimum Compressive Strength-4,000 PSI @ 28 days.
- * Steel Reinforcement:
 - Reg. Duty: #3 Deformed Bar (Gr. 40) ASTM A-615, or equal.
 - H-20: #4 Deformed Bar (Gr. 60) ASTM A-615, or equal.
- * Fibre Mesh Reinforcement ASTM C-1116: Euclid Tuf-Strand, or equal @ a Rate of 3.33 lbs/cy.
- * Capacity: 500 gallons
- * Approximate Weight: 2,600 lbs.



2 COMMERCE DRIVE PO BOX 5133, BROOKFIELD, CT 06804
PHONE (203) 775-0230 FAX (203) 740-2059 WWW.EASTERNPRECAST.COM

PROJECT			
TITLE			
DRAWN BY Brett B.		DATE 5-01-05	
SCALE	DWG. NO.	SHEET	REV.
.	DW3	1 OF 1	B