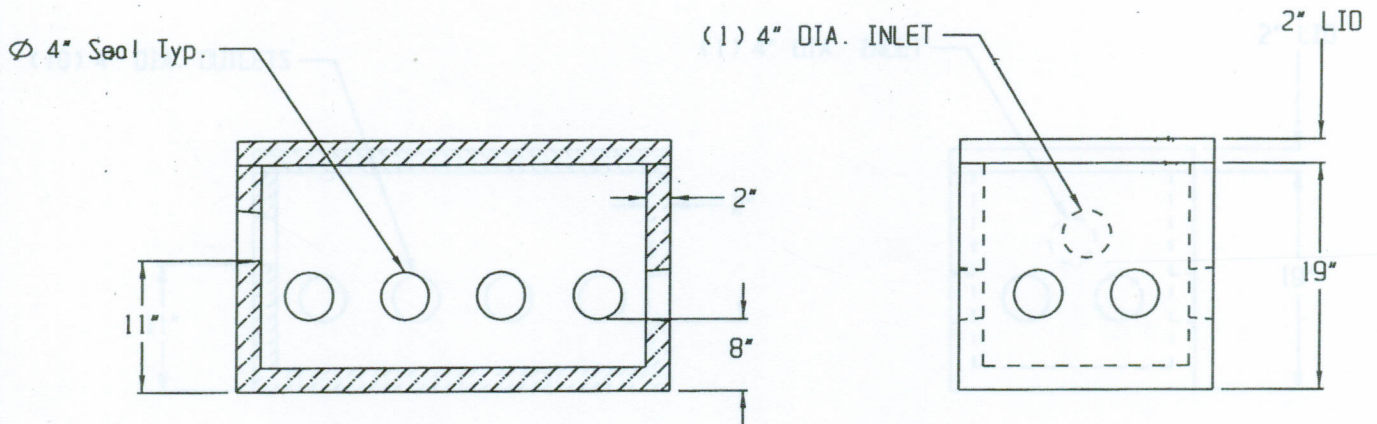
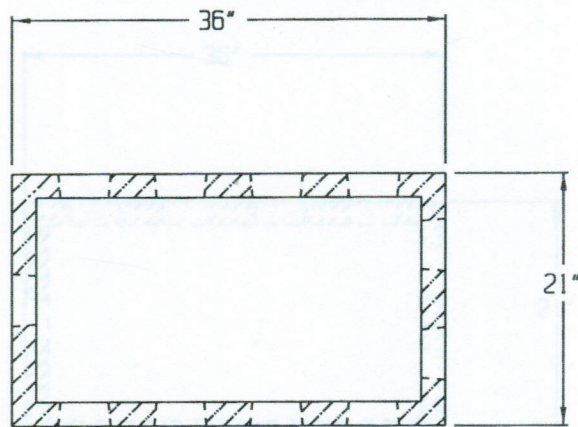


# DB-10 EVEN FLOW DISTRIBUTION BOX ( 1 INLET, 10 OUTLETS )



**SPECIFICATIONS:**

- \* Concrete Minimum Compressive Strength-4,000 P.S.I at 28 days.
- \* Steel Reinforcement:
  - Welded Wire Mesh 6"x 6"x W1.4/W1.4 ASTM A-185, or equal (Lid)
  - #3 Deformed Bar(Gr.40) ASTM A-615, or equal (Box)
- \* Fibre Mesh Reinforcement ASTM C-1116: Euclid Tuf-Strand, or equal @ a Rate of 3.33 lbs/cy. (Box)
- \* 4" Pipe Seal: Tuf-Tite TS-4Pro, or Equal.
- \* Approximate Weight: Box 400 lbs., Lid 180 lbs.



2 COMMERCE DRIVE PO BOX 5133, BROOKFIELD, CT 06804  
 PHONE( 203)775-0230 FAX( 203)740-2059 WWW.EASTERNPRECAST.COM

PROJECT			
TITLE			
DRAWN BY BRETT B.		DATE 05-23-05	
SCALE 2:1	DWG. NO. DB10	SHEET 1 OF 1	REV. B