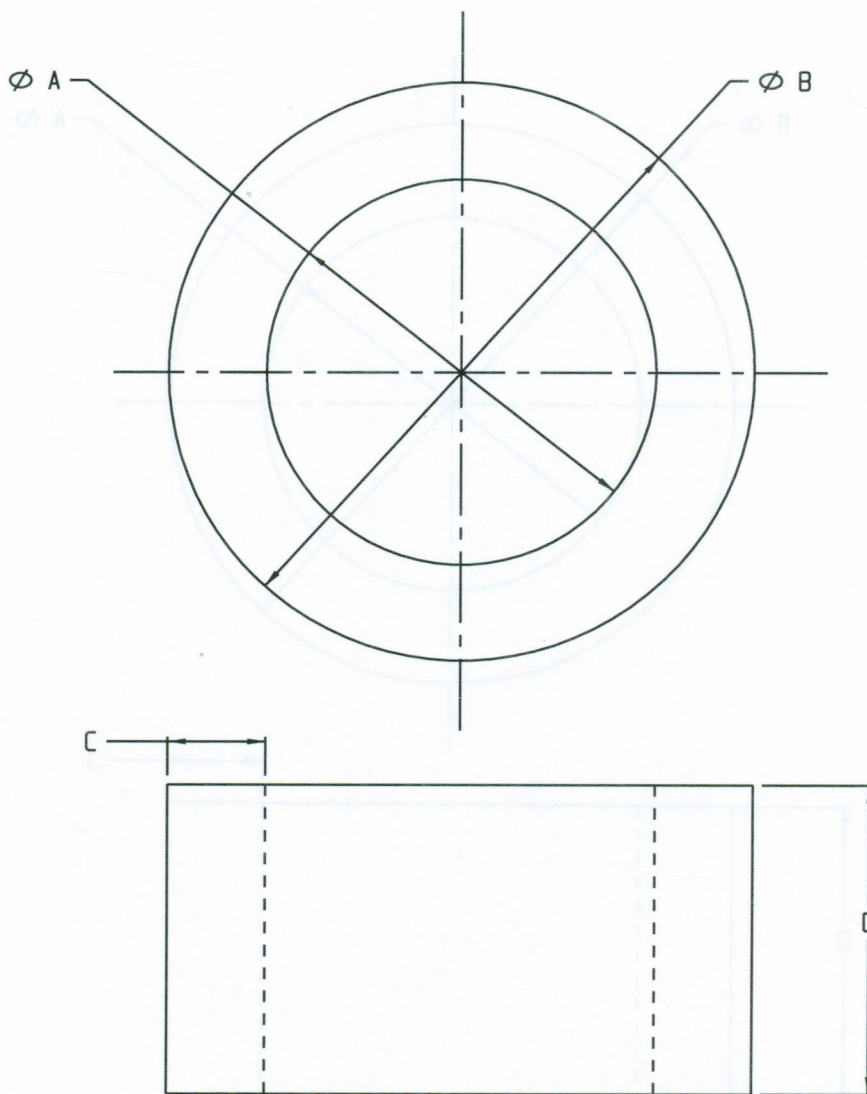


CONCRETE SEPTIC TANK RISER



A	B	C	D	
Inside Dia.	Outside Dia.	Wall Thickness	Height	Weight
24"	28"	2"	24"	300 lbs
36"	41"	2 1/2"	18"	380 lbs
36"	44"	4"	30"	1140 lbs

SPECIFICATIONS:

- * Concrete Minimum Compressive Strength-4,000 P.S.I at 28 days.
- * Steel Reinforcement:
Welded Wire Mesh 6"x6"x W1.4/W1.4 ASTM A-185, or equal



**EASTERN
PRECAST**
COMPANY, INCORPORATED

2 COMMERCE DRIVE PO BOX 5133, BROOKFIELD, CT 06804
PHONE: 203 775-0230 FAX: 203 740-2059 WWW.EASTERNPRECAST.COM

PROJECT

TITLE

DRAWN BY BRETT B.

DATE 05-23-05

SCALE

REFERENCE CHART

ONG. NO.

CTR

SHEET

1 OF 1

REV.

A