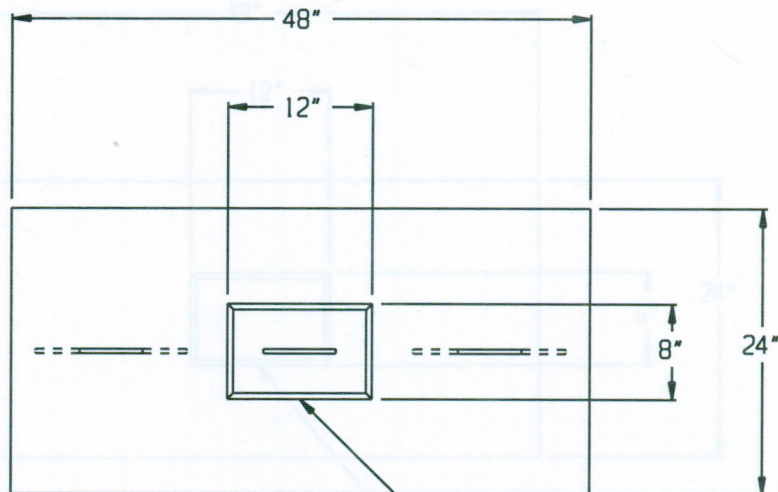
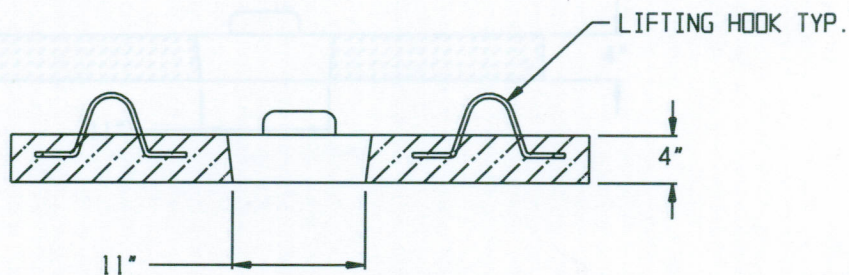


24" X 48" SLAB



INSPECTION COVER
(Optional)



SPECIFICATIONS:

- * Concrete Minimum Compressive Strength-4,000 P.S.I at 28 days.
- * Steel Reinforcement:
Welded Wire Mesh 4" x 4" x W4/W4 ASTM A-185, or equal
- * Available Solid or With Inspection Cover.
- * Approximate Weight: 375 lbs.



2 COMMERCE DRIVE PO BOX 5133, BROOKFIELD, CT 06804
PHONE (203) 775-0230 FAX (203) 740-2059 WWW.EASTERNPRECAST.COM

PROJECT

TITLE

DRAWN BY BRETT B.

DATE 05-23-05

SCALE

DWG. NO.

SLB2448

SHEET

1 OF 1

REV.

C