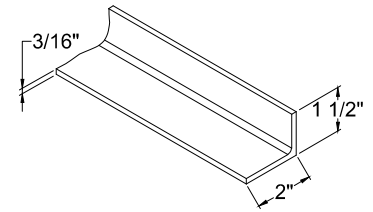
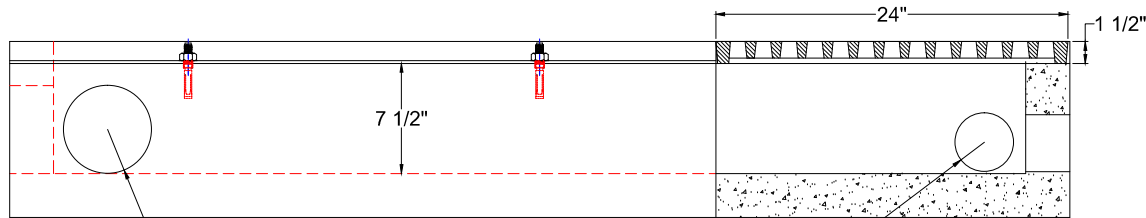


REMOVABLE CAST IRON GRATE (3 SECTIONS)
GRATE OPENINGS - 1 1/4" X 3"

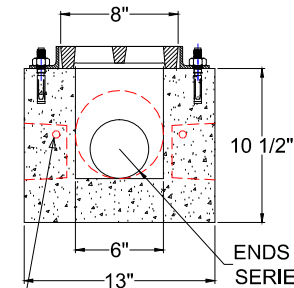


2" X 1 1/2" X 3/16" ANGLE IRON FRAME
(BOLTED ON)



(3) 6" PIPE KNOCKOUTS - 6' SECTION ONLY
(3) 4" PIPE KNOCKOUTS - 6' SECTION ONLY

SECTION A-A



SECTION B-B

ALIGNMENT PIN HOLES

ENDS KNOCKOUT FOR
SERIES INSTALLATION

Specifications :

- Concrete Minimum Compressive Strength - 4,000 psi @ 28 days
- Steel Reinforcement :
 #3 Deformed Bar (Gr.40) ASTM A-615, or equal
- 4" Pipe Seals : Tuf-Tite TS-4Pro, or equal.
- Approximate Weight: 6' Section 560 lbs.

NOTES :

WATER PASS AREA 32 SQ. INCH . (PER TRENCH GRATE)



EASTERN PRECAST
COMPANY, INCORPORATED

2 COMMERCE DRIVE, BROOKFIELD, CT 06804
PHONE : (203) 775 - 0230 FAX : (203) 740 - 2059
WWW.EASTERNPRECAST.COM

8" TRENCH

MATERIAL :		MODEL NO.	RTDCI - W/STEEL FRAME
DOCUMENT APPROVED BY :	DATE :	LOAD RATING	H - 20
	DWNG DATE : 04/19/2019	REVISION 1 - DATE	REV
	CHKD DATE :	REVISION 2 - DATE	
TOLERANCE			

PROPRIETARY NOTE : THE INFORMATION CONTAINED IN THIS DRAWING IS THE SOLE PROPERTY OF **EASTERN PRECAST** PLEASE CONTACT **EASTERN PRECAST** FOR REPRODUCTION AND MANUFACTURING.