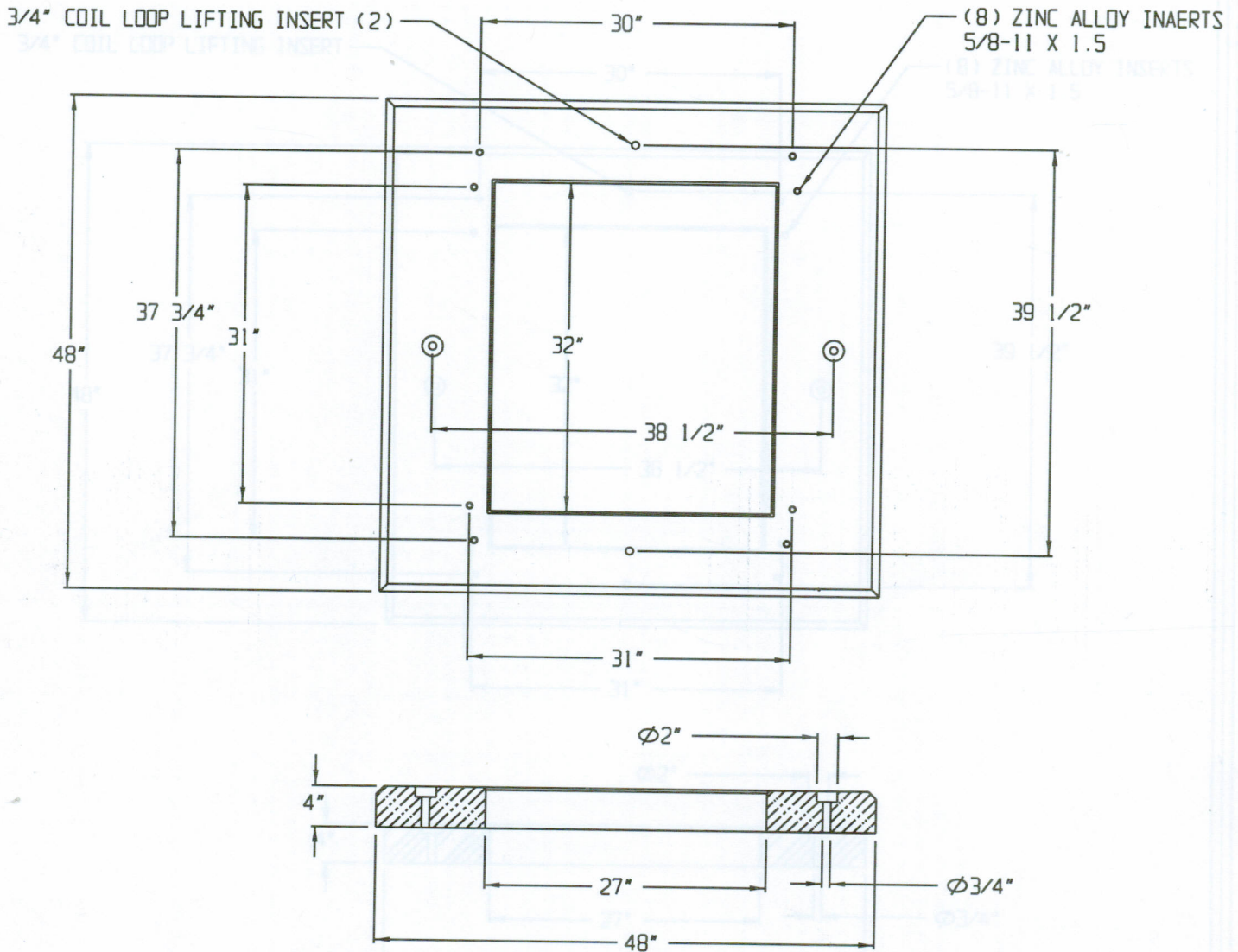


CL&P SINGLE PHASE SWITCH PAD SPC P-017

CL&P SINGLE PHASE SWITCH PAD SPC P-017



SPECIFICATIONS:

- * Concrete Minimum Compressive Strength-5,000 P.S.I at 28 days.
- * Steel Reinforcement:
Welded Wire Mesh 6"x 6"x W1.4/W1.4 ASTM A-185, or equal
#4 Deformed Bar (Gr. 60) ASTM A-615, or equal
- * Meets Latest Northeast Utilities Specifications.
- * Approximate Weight: 360 lbs.



2 COMMERCE DRIVE PO BOX 5133, BROOKFIELD, CT 06804
PHONE: 203 775-0230 FAX: 203 740-2059 WWW.EASTERNPRECAST.COM

PROJECT			
TITLE			
DRAWN BY BRETT B.		DATE 05-23-05	
SCALE	DWG. NO.	SHEET	REV.
	P017	1 OF 1	C