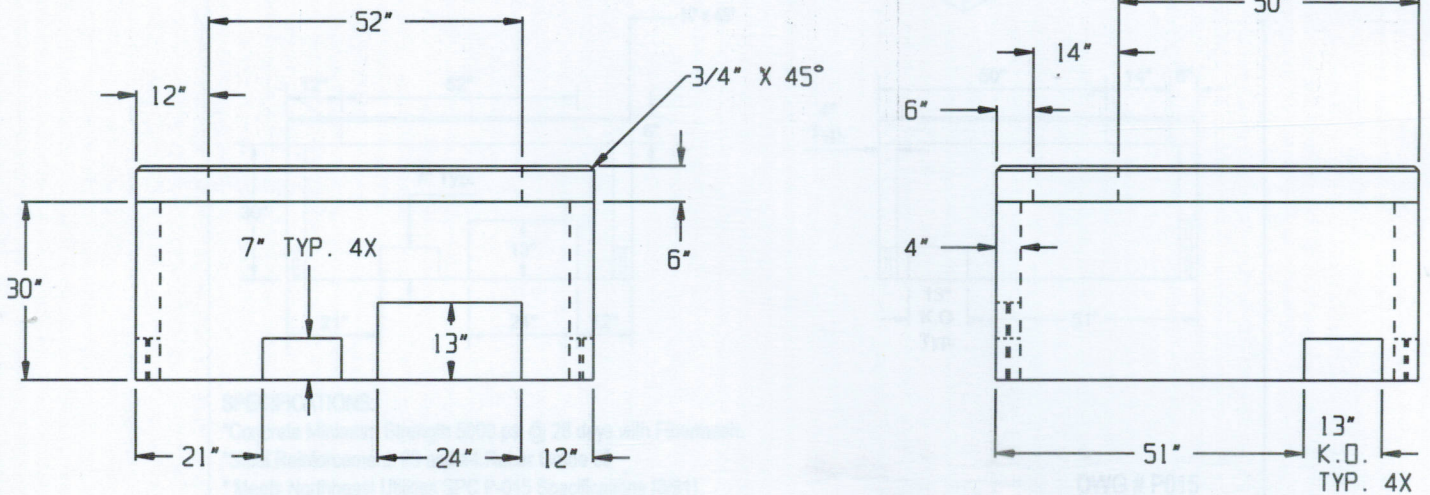
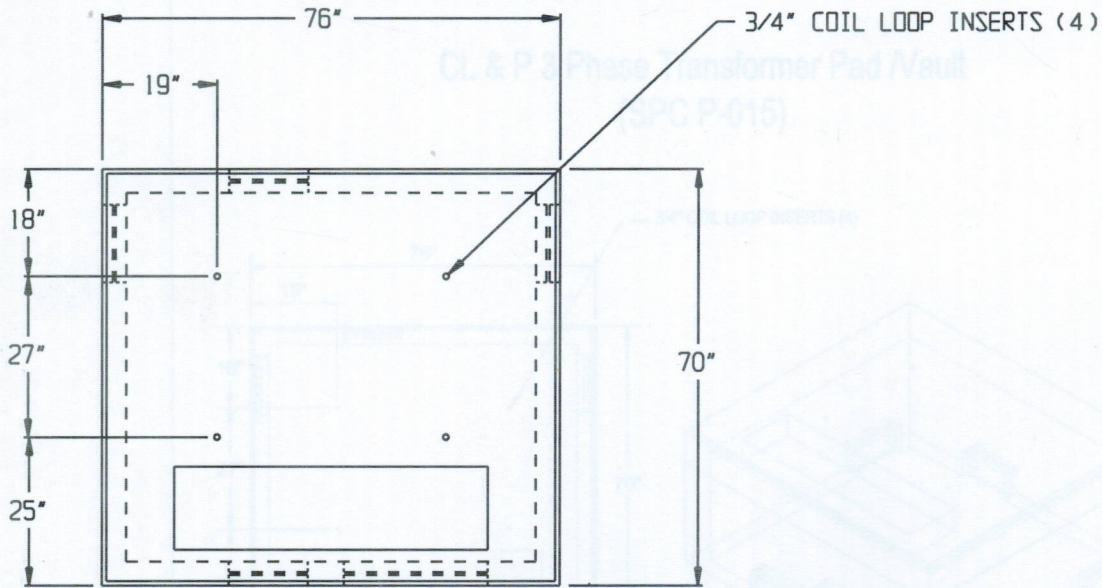


# CL & P PHASE TRANSFORMER PAD/VAULT (SPC P-015)



## SPECIFICATIONS:

- \* Concrete Minimum Compressive Strength-5,000 P.S.I at 28 days.
- \* Steel Reinforcement:
  - #3 Deformed Bar (Gr. 40) ASTM A-615, or equal
  - #4 Deformed Bar (Gr. 60) ASTM A-615, or equal
- \* Meets Latest Northeast Utilities Specifications.
- \* Approximate Weight: 5300 lbs.



**EASTERN  
PRECAST**  
COMPANY, INCORPORATED

2 COMMERCE DRIVE PO BOX 5133, BROOKFIELD, CT 06804  
PHONE (203) 775-0230 FAX (203) 740-2059 WWW.EASTERNPRECAST.COM

PROJECT			
TITLE			
DRAWN BY BRETT B.		DATE 10-19-05	
SCALE 2:1	DWG. NO. P015	SHEET 1 OF 1	REV. B