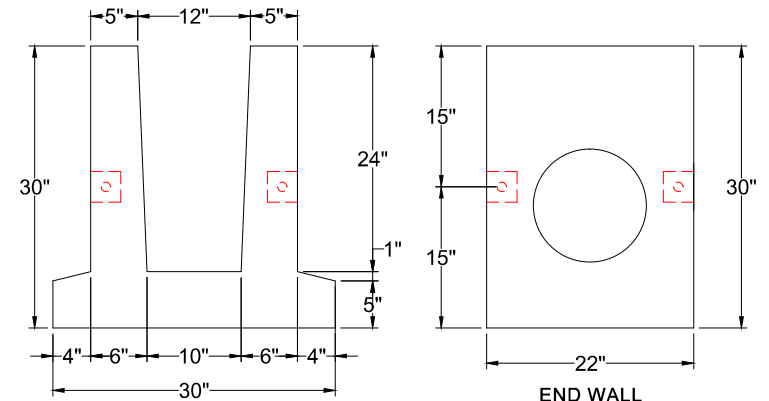
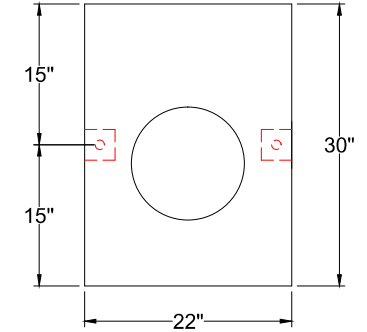


PLAN



END VIEW



END WALL
END WALL CAN BE
INSTALLED W/ HOLE
UP TO CREATE A SUMP.

PIPE HOLE AS REQUIRED:
IN ENDWALL (12" MAX PIPE DIA.)
OR IN SIDEWALL (15" MAX PIPE DIA.)

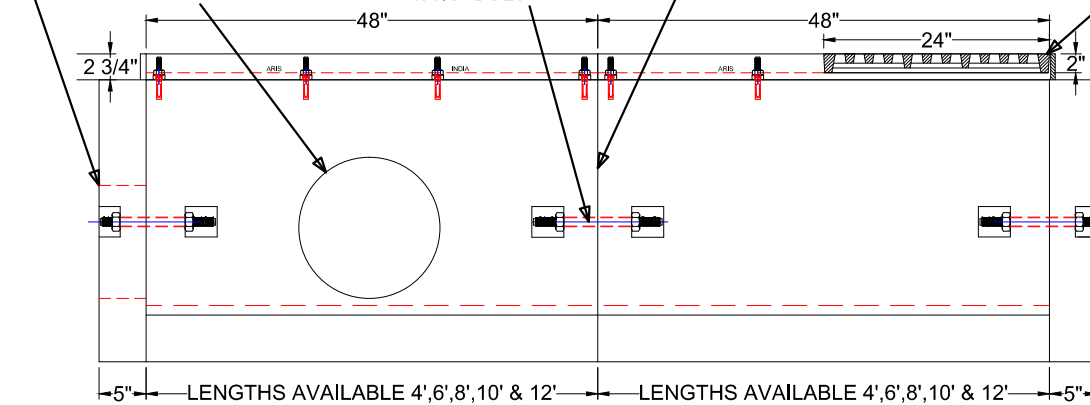
BOLT POCKET @
EA JOINT WITH
Ø7/8" BOLT.

JOINTS SEALED WITH
SIKAFLEX 1A

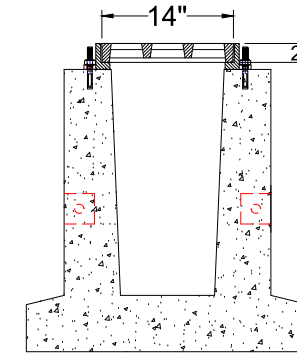
CAST IRON FRAME

2' GRATE SECTIONS

END WALL
EACH END



ELEVATION



END VIEW

Specifications :

- Concrete Minimum Compressive Strength - 4,000 psi @ 28 days
- Concrete Air Entrainment : 4% - 9%
- Type I, or Type I/II Cement
- Steel Reinforcement :
Welded Wire Mesh 4" X 4" x W4/W4 ASTM-185 , or equal
#4 Deformed Bar (Gr.60) ASTM A-615, or equal
- Meets HS-20 Wheel Load
- Butt Joint Between Sections Sealed w/Sikaflex 1a
- Fiber Mesh Reinforcement ASTM C-1116 @ a Rate of 4.0 lbs/cy
- Approximate Weight:
Trench Section = 435 Lbs/LF
Solid End Wall = 250 Lbs
- Cast-in Utility Anchors Where Needed, for Handling
- Available with Manhole Boots, Conforming to ASTM C-923 Specification
- Cast Iron Frames & Cover/Grates Conform to ASTM A-48 Class 30B or 35B Specs

NOTES :

WATER PASS AREA 86 SQ. INCH . (PER TRENCH GRATE)

EASTERN PRECAST
COMPANY, INCORPORATED
2 COMMERCE DRIVE, BROOKFIELD, CT 06804
PHONE : (203) 775 - 0230 FAX : (203) 740 - 2059
WWW.EASTERNPRECAST.COM

14" MEGA TRENCH

MATERIAL :		MODEL NO.	MTD4-12	
DOCUMENT APPROVED	DWNG DATE : 11/06/2017	LOAD RATING	H - 20	
BY :	DATE :	REVISION 1 - DATE	REV	
	CHKD DATE :	REVISION 2 - DATE		