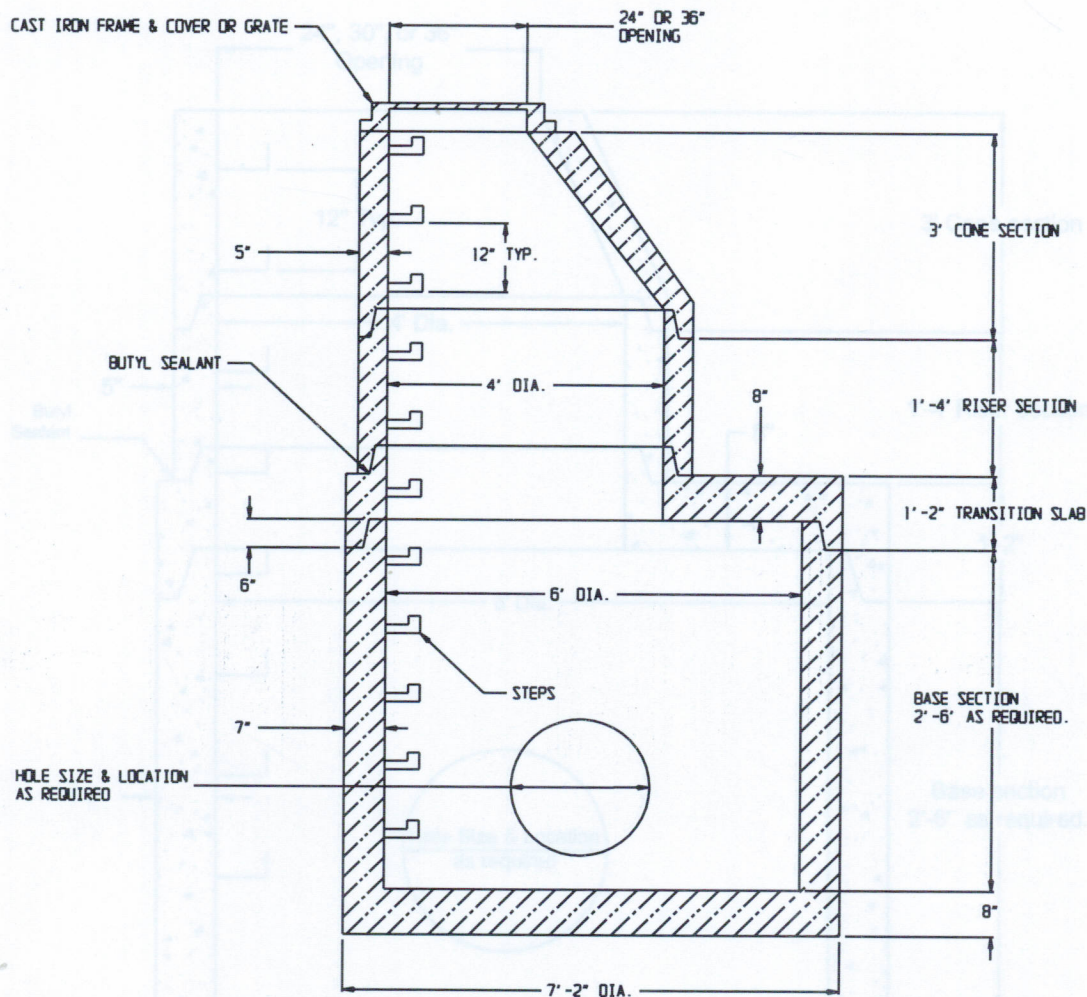


# 72" DIAMETER MANHOLE with 48" TRANSITION AASHTO HS-20



## SPECIFICATIONS:

- \* Manhole Design Conforms to: "Precast Reinforced Concrete Manhole Sections ASTM C 478"
- \* Concrete Minimum Compressive Strength-4,000 P.S.I at 28 days.
- \* Steel Reinforcement: ASTM A-185 Area 0.18 sq.in./vert.Ft. or Equal
- \* Joint Sealant: Butyl Resin Sealant AASHTO M-198B, ASTM C-990-91, Federal Specification SS-S-210
- \* Manhole Steps: 1/2" Deformed Reinforcing Steel ASTM A-615 Grade 60, Copolymer Polypropylene ASTM D-4104. Conforms to OSHA Standards.
- \* Base Section is Monolithic.
- \* Available w/Mortar Joint Knockouts (storm), or Flexible Manhole to Pipe Connector (sewer) ASTM C 923.
- \* Approximate Weight:

Base Slab: 3,600 lbs.  
Risers: 1,700 lbs./vert. ft.  
Transition Slab: 2,500 lbs.



2 COMMERCE DRIVE PO BOX 5133, BROOKFIELD, CT 06804  
PHONE: 203 775-0230 FAX: 203 740-2059 WWW.EASTERNPRECAST.COM

PROJECT			
TITLE			
DRAWN BY BRETT B.		DATE 8-01-05	
SCALE	DWG. NO.	SHEET	REV.
	MH72C	1 OF 1	C