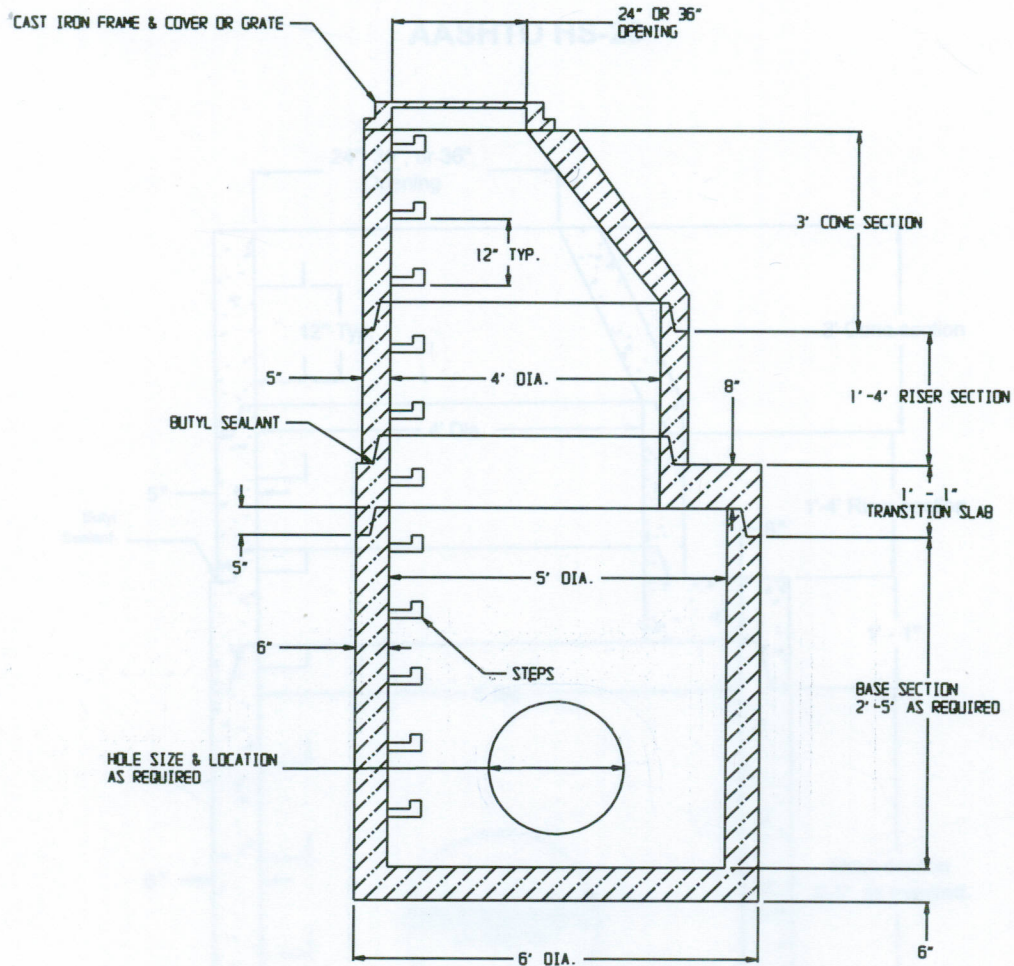


60" DIAMETER MANHOLE with 48" TRANSITION AASHTO HS-20



SPECIFICATIONS:

- * Manhole Design Conforms to: "Precast Reinforced Concrete Manhole Sections ASTM C 478"
- * Concrete Minimum Compressive Strength-4,000 P.S.I at 28 days.
- * Steel Reinforcement: ASTM A-185 Area 0.15 sq.in./vert.Ft. or Equal
- * Joint Sealant: Butyl Resin Sealant AASHTO M-198B, ASTM C-990-91, Federal Specification SS-S-210
- * Manhole Steps: 1/2" Deformed Reinforcing Steel ASTM A-615 Grade 60, Copolymer Polypropylene ASTM D-4104. Conforms to OSHA Standards.
- * Base Section is Monolithic.
- * Available w/Mortar Joint Knockouts (storm), or Flexible Manhole to Pipe Connector (sewer) ASTM C 923.
- * Approximate Weight:

Base Slab: 1,900 lbs.
Risers: 1,300 lbs./vert. ft.
Transition Slab: 1,500 lbs.

**EASTERN
PRECAST**
COMPANY, INCORPORATED

2 COMMERCE DRIVE PO BOX 5133, BROOKFIELD, CT 06804
PHONE: 203 775-0230 FAX: 203 740-2059 WWW.EASTERNPRECAST.COM

| | | | |
|-------------------|----------|--------------|------|
| PROJECT | | | |
| TITLE | | | |
| DRAWN BY BRETT B. | | DATE 8-01-05 | |
| SCALE | DWG. NO. | SHEET | REV. |
| | MH60C | 1 OF 1 | C |