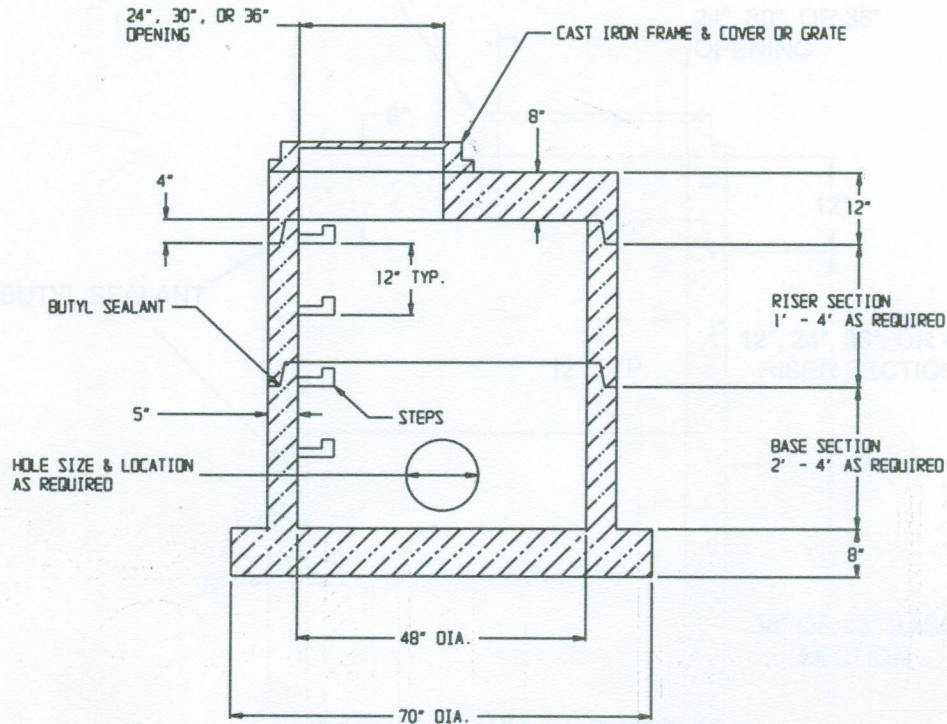


48" DIAMETER MANHOLE AASHTO HS-20

CAST IRON FRAME & COVER OR GRATE



SPECIFICATIONS:

- * Manhole Design Conforms to: "Precast Reinforced Concrete Manhole Sections ASTM C 478"
- * Concrete Minimum Compressive Strength-4,000 P.S.I at 28 days.
- * Steel Reinforcement: ASTM A-185 Area 0.12 sq.in./vert.Ft. or Equal
- * Joint Sealant: Butyl Resin Sealant AASHTO M-198B, ASTM C-990-91, Federal Specification SS-S-210
- * Manhole Steps: 1/2" Deformed Reinforcing Steel ASTM A-615 Grade 60, Copolymer Polypropylene ASTM D-4104. Conforms to OSHA Standards.
- * Available w/Mortar Joint Knockouts (storm), or Flexible Manhole to Pipe Connector (sewer) ASTM C 923.
- * Base Slab: Extended or Non-Extended, Monolithic Pour.
- * Approximate Weight:

Base Slab: 1,600 lbs.
Risers: 800 lbs./vert. ft.
Top Slab: 1,500 lbs.



**EASTERN
PRECAST**
COMPANY, INCORPORATED

2 COMMERCE DRIVE PO BOX 5133, BROOKFIELD, CT 06804
PHONE (203) 775-0230 FAX (203) 740-2059 WWW.EASTERNPRECAST.COM

PROJECT			
TITLE			
DRAWN BY BRETT B.		DATE 8-01-05	
SCALE	DWG. NO.	SHEET	REV.
	MH48S-01	1 OF 1	C