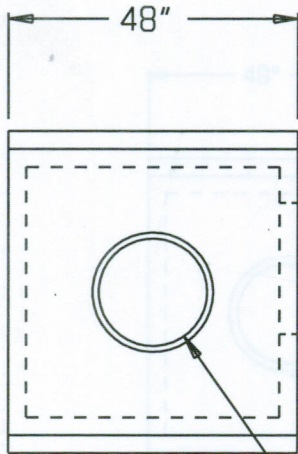
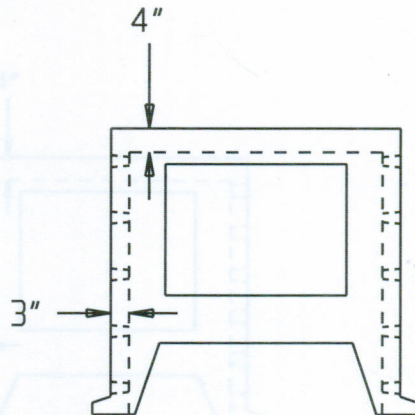


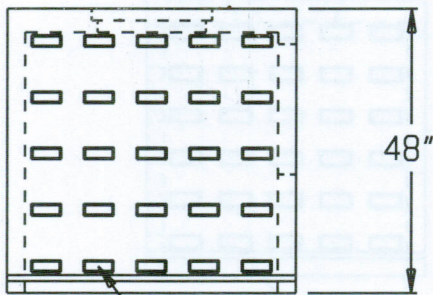
48" X 48" LEACHING GALLERIE



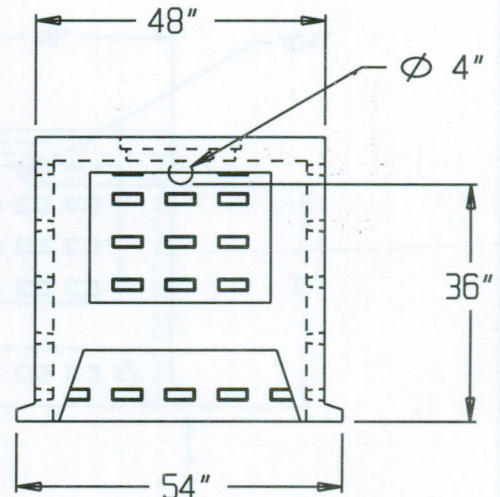
20" INSPECTION COVER
(END SECTION ONLY)



CENTER SECTION



2" X 5" WEEP HOLES



END SECTION

SPECIFICATIONS:

- * Concrete Minimum Compressive Strength-4,000 P.S.I at 28 days.
- * Steel Reinforcement:
 Reg. Duty & H-20: #3 Deformed Bar (Gr.40) ASTM A-615, or equal
 H-20: #4 Deformed Bar (Gr.60) ASTM A-615, or equal
- * Effective Leaching Area: 9.2 sf/lf
- * Approximate Capacity without stone: 360 gals
- * Approximate Weight: Center Section = 2,140 lbs. End Section= 2,520



2 COMMERCE DRIVE PO BOX 5133, BROOKFIELD, CT 06804
 PHONE(203)775-0230 FAX(203)740-2059 WWW.EASTERNPRECAST.COM

PROJECT

TITLE

DRAWN BY Brett B.

DATE 09-21-05

SCALE

1:1

DWG. NO.

LG444

SHEET

1 OF 1

REV.

C