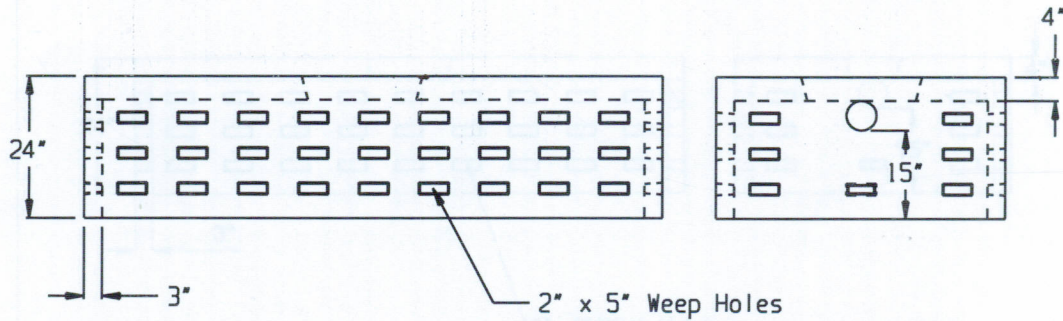
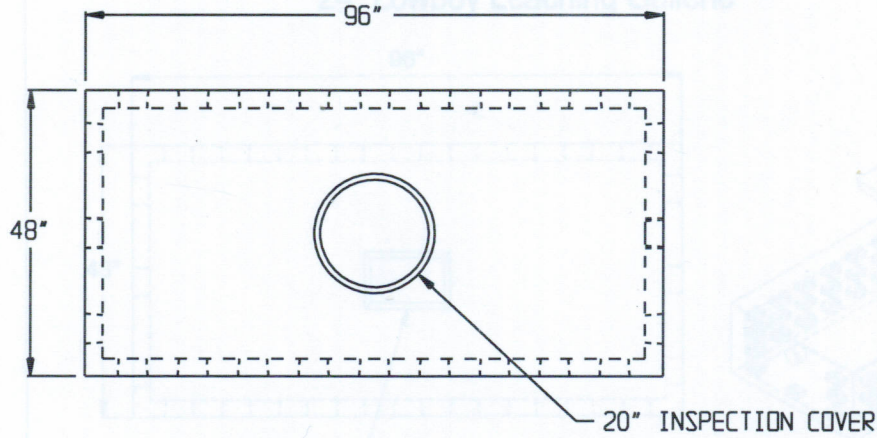


24" Lowboy Leaching Gallerie



SPECIFICATIONS:

- * Concrete Minimum Compressive Strength-4,000 PSI @ 28 days.
- * Steel Reinforcement:
 Reg. Duty & H-20: #3 Deformed Bar (Gr.40) ASTM A-615, or equal.
 H-20: #4 Deformed Bar (Gr. 60) ASTM A-615, or equal.
- * Effective Leaching Area: 6.8 sf/lf
- * Approximate Capacity without stone: 320 gals
- * Approximate Weight: 2,800 lbs.



**EASTERN
PRECAST**
COMPANY, INCORPORATED

2 COMMERCE DRIVE PO BOX 5133, BROOKFIELD, CT 06804
 PHONE (203) 775-0230 FAX (203) 740-2059 WWW.EASTERNPRECAST.COM

PROJECT			
TITLE			
DRAWN BY BRETT B.		DATE 05-23-05	
SCALE	ONG. NO.	SHEET	REV.
	LG24LB	1 OF 1	C