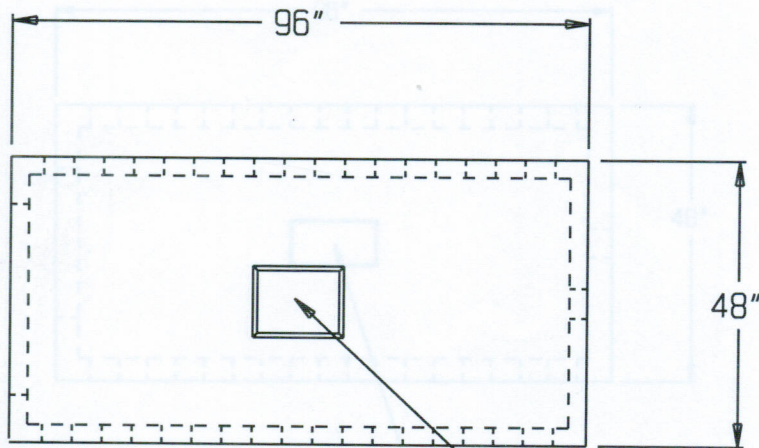
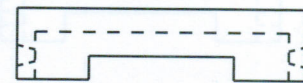


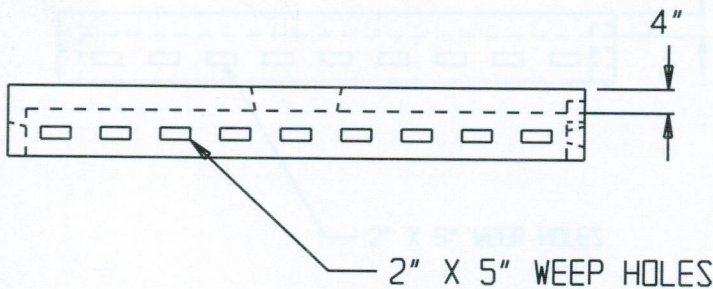
12" LOWBOY LEACHING GALLERIE



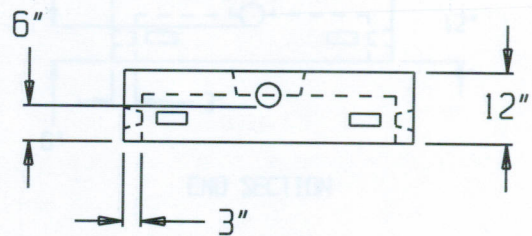
INSPECTION COVER
(END SECTION ONLY)



CENTER SECTION



2" X 5" WEEP HOLES



END SECTION

SPECIFICATIONS:

- * Concrete Minimum Compressive Strength-4,000 P.S.I at 28 days.
- * Steel Reinforcement:
 Reg. Duty & H-20: #3 Deformed Bar (Gr.40) ASTM A-615, or equal
 H-20: #4 Deformed Bar (Gr.60) ASTM A-615, or equal
- * Effective Leaching area: 5.9 sf/lf
- * Approximate Capacity without stone: 130 gals
- * Approximate Weight: 2,100 lbs.

4' SECTIONS AVAILABLE



2 COMMERCE DRIVE PO BOX 5133, BROOKFIELD, CT 06804

PHONE(203)775-0230 FAX(203)740-2059 WWW.EASTERNPRECAST.COM

PROJECT			
TITLE			
DRAWN BY Brett B.		DATE 09-19-05	
SCALE	DWG. NO.	SHEET	REV.
1:1	LG12LB	1 OF 1	C