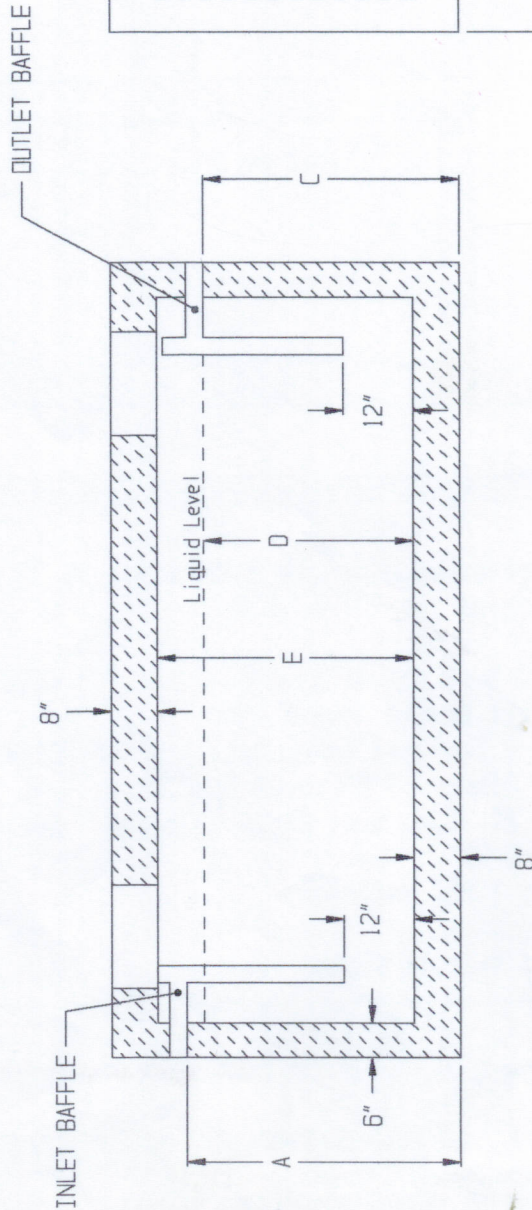
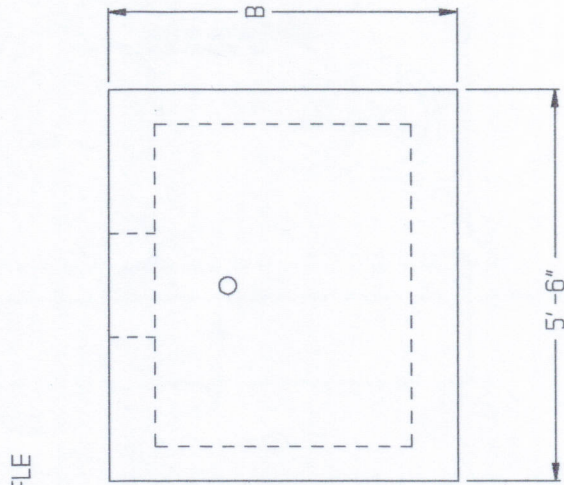
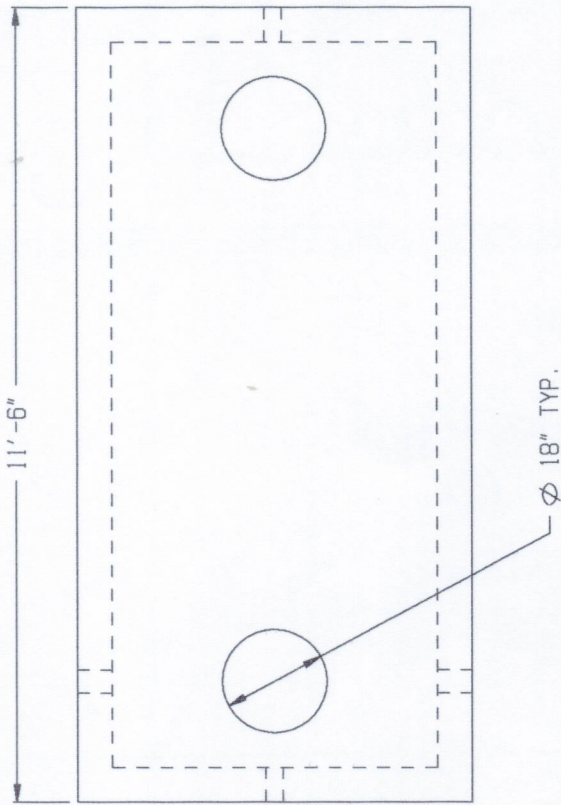


# H-20 GREASE TRAP

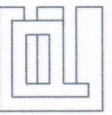
## SPECIFICATIONS:

- \* Concrete Minimum Strength-5,000 PSI at 28 Days.
- \* Steel Reinforcement - DB 4" x 4" Grade 60 Or Equal.
- \* Construction Joint Sealed With Butyl Sealant.
- \* Construction Joint On 1000 Gallon Is Above. Static Liquid Level. Construction Joint On Larger Sizes Is Below Static Liquid Level.



Bank Capacity	A	B	C	D	E
1000	47"	61"	44"	36"	45"
1250	56"	70"	53"	45"	54"
1500	66"	79"	63"	55"	63"
2000	82"	95"	79"	71"	79"
2500	102"	115"	98"	91"	99"
3000	117"	130"	114"	106"	114"
3500	135"	148"	132"	124"	132"

DWG # GTH20



**EASTERN PRECAST CO., INC.**  
 P.O. Box 5133 2 Commerce Dr., Brookfield, CT 06804  
 Phone (203) 775-0230 775-9380 Fax (203) 740-2059