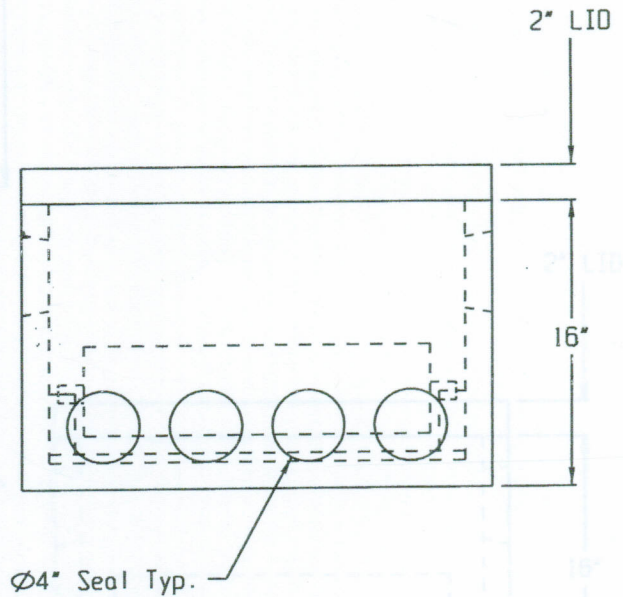
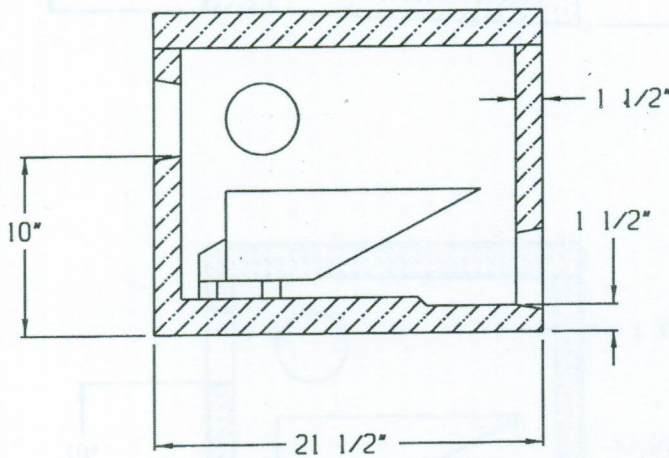
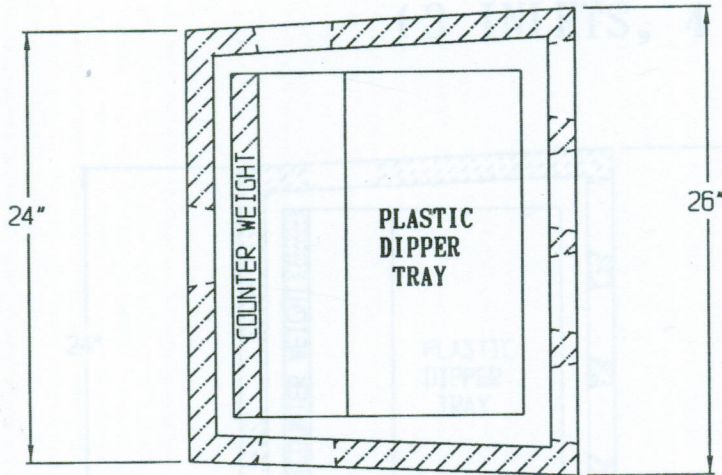


DIPPER BOX (3 INLETS, 4 OUTLETS)



SPECIFICATIONS:

- * Concrete Minimum Compressive Strength-4,000 P.S.I at 28 days.
- * Steel Reinforcement:
Welded Wire Mesh 6"x 6"x W1.4/W1.4 ASTM A-185, or equal (Lid)
- * Fibre Mesh Reinforcement ASTM C-1116: Euclid Tuf-Strand, or equal @ a Rate of 3.33 lbs/cy. (Box)
- * 4" Pipe Seal: Tuf-Tite TS-4Pro, or Equal.
- * When Plastic Dipper Tray Fills With 1.5 Gallons Effluent it Will Automatically Discharge and Equally Dose System in 1.5 Seconds. After it Discharges, Counterweight Returns Dipper Tray to its Original Position.
- * Approximate Weight: Box 220 lbs., Lid 85 lbs.



**EASTERN
PRECAST**
COMPANY, INCORPORATED

2 COMMERCE DRIVE PO BOX 5133, BROOKFIELD, CT 06804
PHONE (203) 775-0230 FAX (203) 740-2059 WWW.EASTERNPRECAST.COM

PROJECT

TITLE

DRAWN BY BRETT B.

DATE 05-23-05

SCALE

ONG. NO.

DPBOX

SHEET

1 OF 1

REV.

C