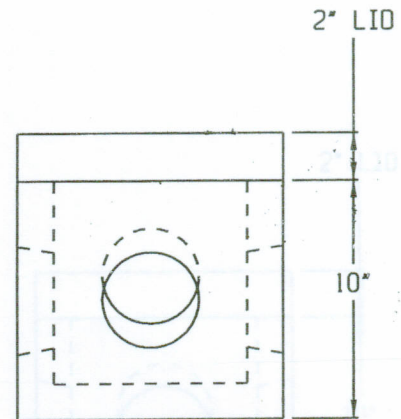
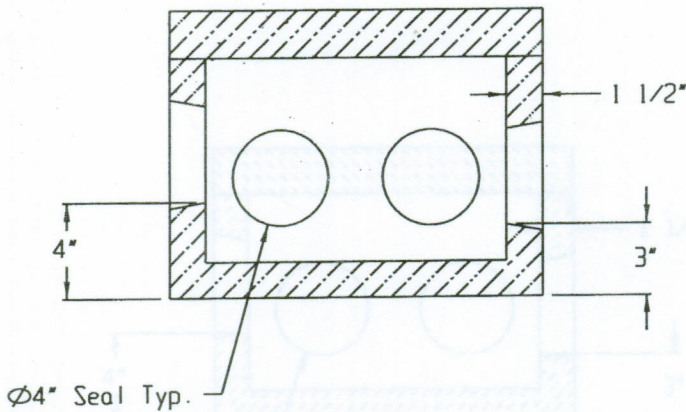
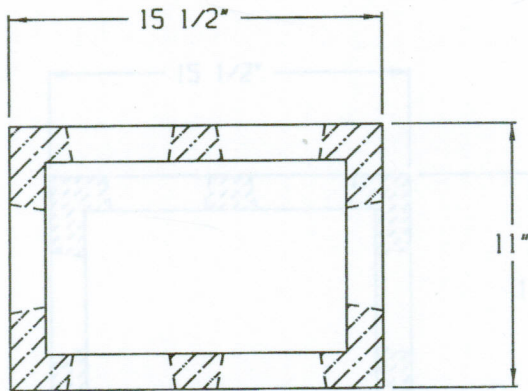


# DB-5 EVEN FLOW DISTRIBUTION BOX (1 INLET, 5 OUTLETS)



### SPECIFICATIONS:

- \* Concrete Minimum Compressive Strength-4,000 P.S.I at 28 days.
- \* Steel Reinforcement:  
Welded Wire Mesh 6"x 6"x W1.4/W1.4 ASTM A-185, or equal (Lid)
- \* Fibre Mesh Reinforcement ASTM C-1116: Euclid Tuf-Strand, or equal @ a Rate of 3.33 lbs/cy. (Box)
- \* 4" Pipe Seal: Tuf-Tite TS-4Pro, or Equal.
- \* Approximate Weight: Box 65 lbs., Lid 30 lbs.



2 COMMERCE DRIVE PO BOX 5133, BROOKFIELD, CT 06804  
 PHONE: 203 775-0230 FAX: 203 740-2059 WWW.EASTERNPRECAST.COM

PROJECT			
TITLE			
DRAWN BY BRETT B.		DATE 05-23-05	
SCALE 4:1	DWG. NO. DB5	SHEET 1 OF 1	REV. B