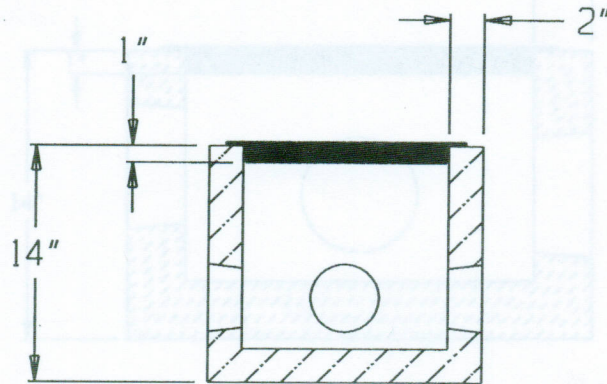
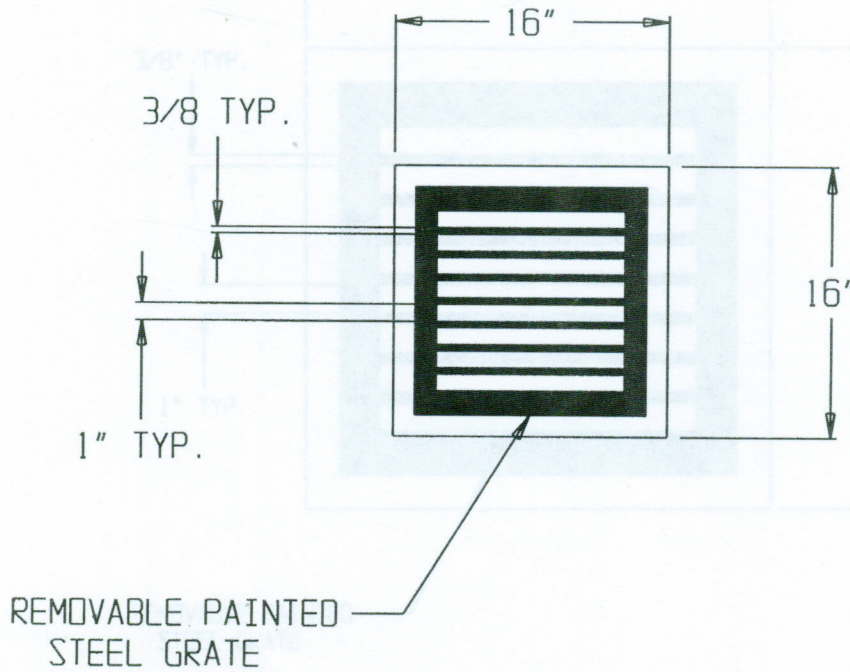


DB-4 W/GRATE



SPECIFICATIONS:

- * Concrete Minimum Compressive Strength-4,000 P.S.I at 28 days.
- * Fibre Mesh Reinforcement ASTM C-1116: Euclid Tuf-Strand, or equal @ a Rate of 3.33 lbs/cy.
- * 4" Pipe Seals: Tuf-Tite TS-4Pro, or equal.
- * Available EF, OF, NY, or With 6" Mortar Knockouts.
- * Approximate Weight: 135 lbs.



2 COMMERCE DRIVE PO BOX 5133, BROOKFIELD, CT 06804
 PHONE (203) 775-0230 FAX (203) 740-2059 WWW.EASTERNPRECAST.COM

PROJECT			
TITLE			
DRAWN BY Brett B.		DATE 09-18-05	
SCALE	ONG. NO.	SHEET	REV.
	DB4GR	1 OF 1	C