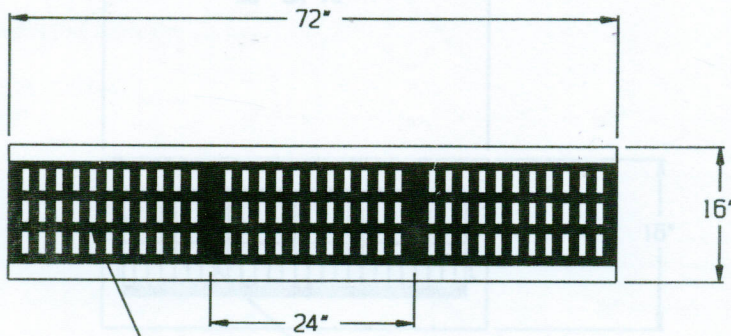
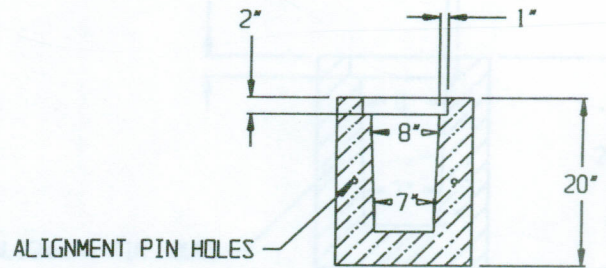
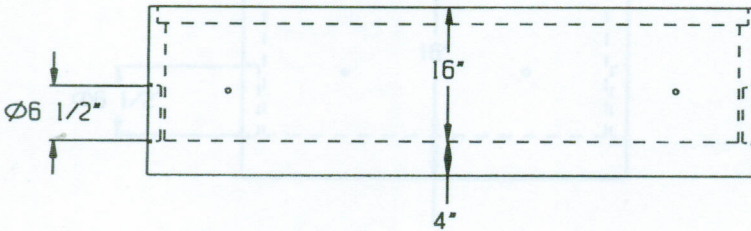


COMMERCIAL TRENCH DRAIN H.D.  
W/CAST IRON GRATES

AASHTO HS-20



REMOVABLE CAST IRON GRATES (3 SECTIONS)  
GRATE OPENINGS - 1" X 2 3/4"



ALIGNMENT PIN HOLES

SPECIFICATIONS:

- \* Concrete Minimum Compressive Strength-4,000 P.S.I at 28 days.
- \* Steel Reinforcement:  
#3 Deformed Bar (Gr.40) ASTM A-615, or equal
- \* Available as Box Section, End Section, or Center Section.
- \* Approximate Weight: 6' Section 1,120 lbs.



2 COMMERCE DRIVE PO BOX 5133, BROOKFIELD, CT 06804  
PHONE(203)775-0230 FAX(203)740-2059 WWW.EASTERNPRECAST.COM

PROJECT			
TITLE			
DRAWN BY Brett B.		DATE 11-14-05	
SCALE	DWG. NO.	SHEET	REV.
	CTDCI	1 OF 1	B