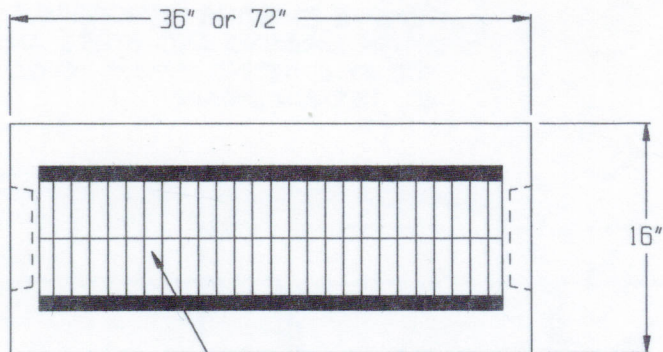
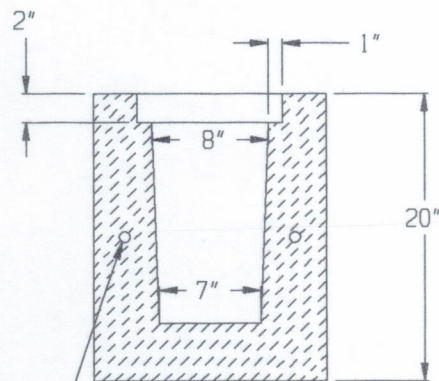
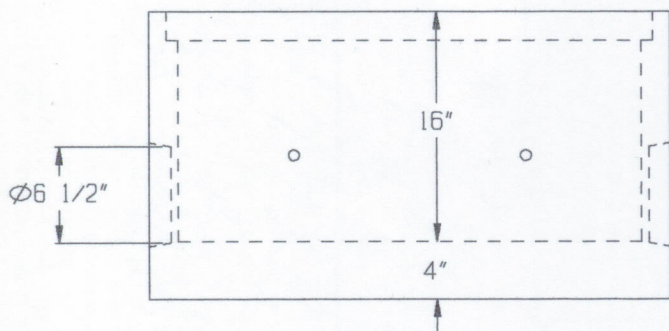


# COMMERCIAL TRENCH DRAIN



REMOVABLE H.D. PAINTED STEEL GRATE (3' SECTIONS)  
 1/4" X 2" BARS - GRATE OPENINGS - 1 1/4"



ALIGNMENT PIN HOLES

## SPECIFICATIONS:

- \* Concrete Minimum Strength-4,000 P.S.I at 28 days with Fibernesh.
- \* Steel Reinforcement: #3 & #4 Rebar Grade 40.
- \* Steel Grate Is Bicycle Safe.
- \* Available In (3) Styles: Box Section-Both Ends Closed w/6" Inverts  
 End Section-1 End Closed w/6" Invert, 1 End Open  
 Center Section-Both Ends Open.

DWG # CTD



**EASTERN PRECAST CO. INC.**

P.O. Box 5133 2 Commerce Dr., Brookfield, CT 06804  
 Phone (203) 775-0230 775-9380 Fax (203) 740-2059