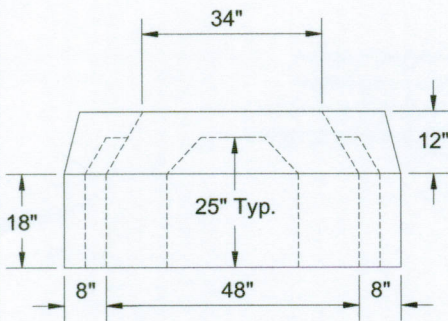
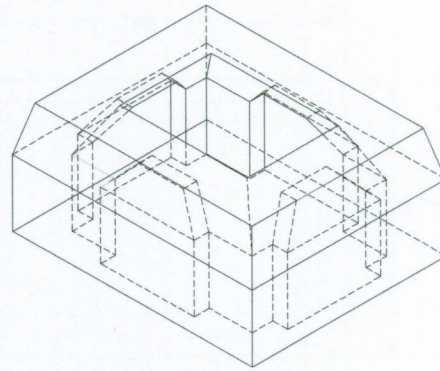
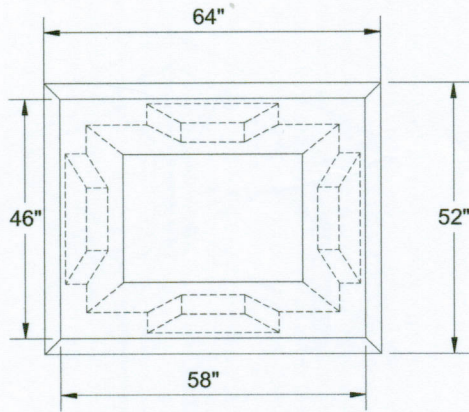
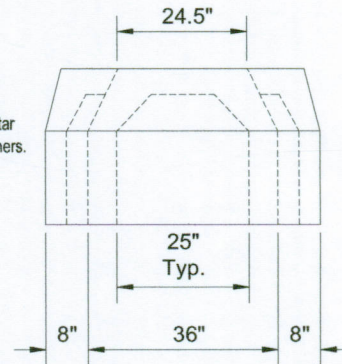


### 30" Standard Catch Basin Cor-Trans Riser



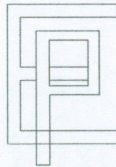
Thin wall Knockout area for pipe entry. Penetration and mortar where needed by others.



**Specifications:**

- \*Concrete minimum Strength 4000 psi @ 28 days with Fibermesh
- \*Steel Reinforcement: welded wire mesh 4" x 4" x w4/w4 (.12sq in/VF)
- #3 rebar grade 40 over opening
- \*Design load: H-20
- \*Approx Weight: 3220 lbs.
- \*2 Recessed utility anchors an interior for lifting.

DWG # CBCTR30



### EASTERN PRECAST CO. INC.

PO. BOX 5133, 2 COMMERCE DR.  
 BROOKFIELD CT 06804  
 Phone: (203) 775-0230, 775-9380  
 Fax: (203) 740-2059  
 WWW.easternprecast.com