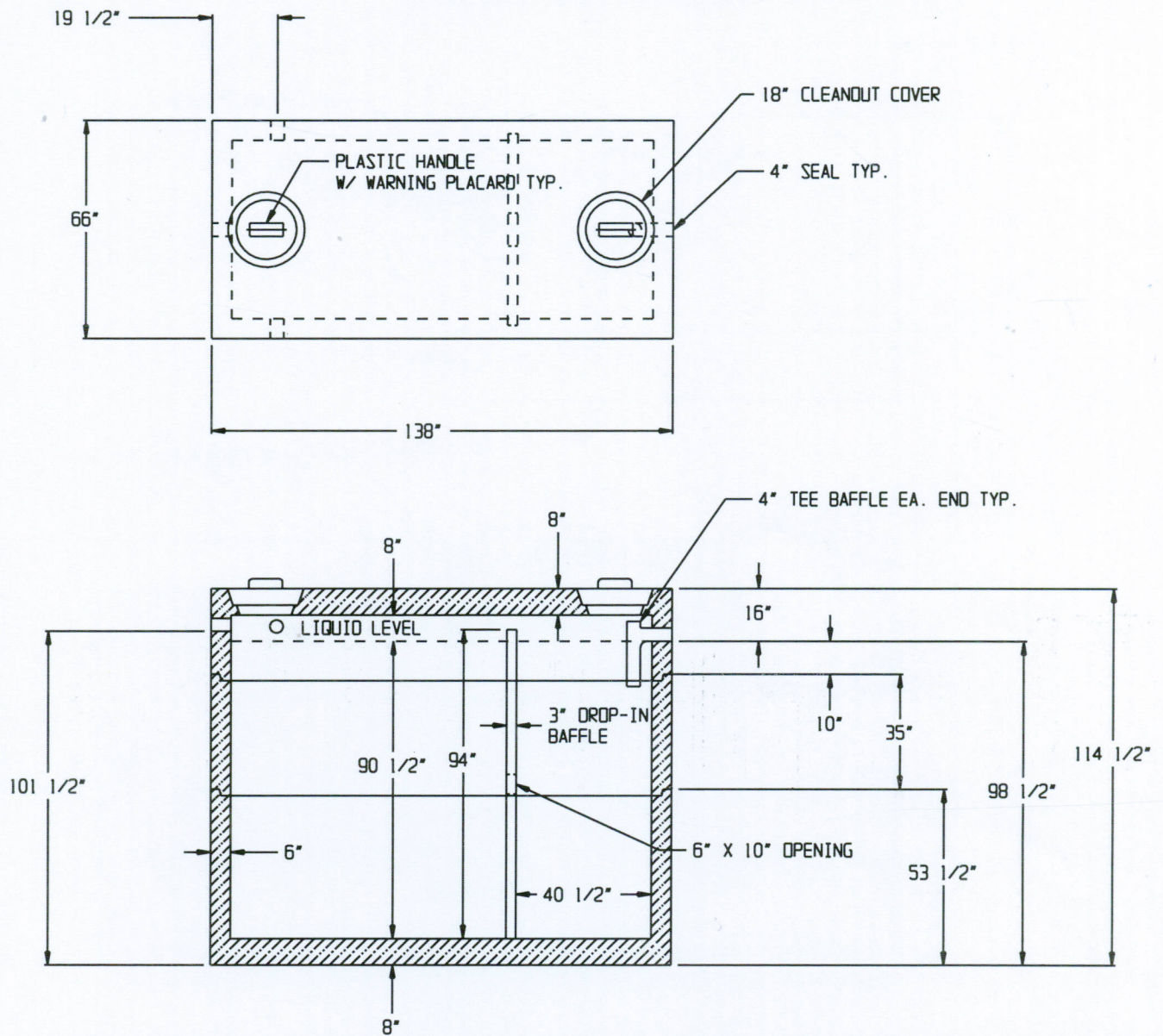


2500 H-20 2 COMPARTMENT SEPTIC TANK



SPECIFICATIONS:

- * Concrete Minimum Compressive Strength-5,000 P.S.I at 28 days.
- * Materials & Manufacturing Per ASTM C-1227
- * Steel Reinforcement:
 - Welded Deformed Bars 4"x 4" D6.5/D6.5 (Gr.80) ASTM A-497, or equal
- * Joint Sealed w/1" Butyl Mastic ASTM C-990.
- * 4" Diameter Outlet Tee Equipped w/Gas Deflector or Effluent Filter.
Length Adjustment By Others If Required By Code.
- * 4" Pipe Seals: Rissy Plastics Mini Boot, or equal. Meets Pressure Requirements of ASTM C-923.
- * Capacity • Flow Line: 2,575 gallons
- * 28.5 Gallons/ Inch of Rise
- * Approximate Assembled Weight: Bottom= 14,300 lbs., Riser=7,200 lbs., Top=9,300 lbs.



2 COMMERCE DRIVE PO BOX 5133, BROOKFIELD, CT 06804
 PHONE (203) 775-0230 FAX (203) 740-2059 WWW.EASTERNPRECAST.COM

PROJECT			
TITLE			
DRAWN BY BRETT B.		DATE 05-23-05	
DWG. NO.		SHEET	
2500H20ST		1 OF 1	
		REV. A	