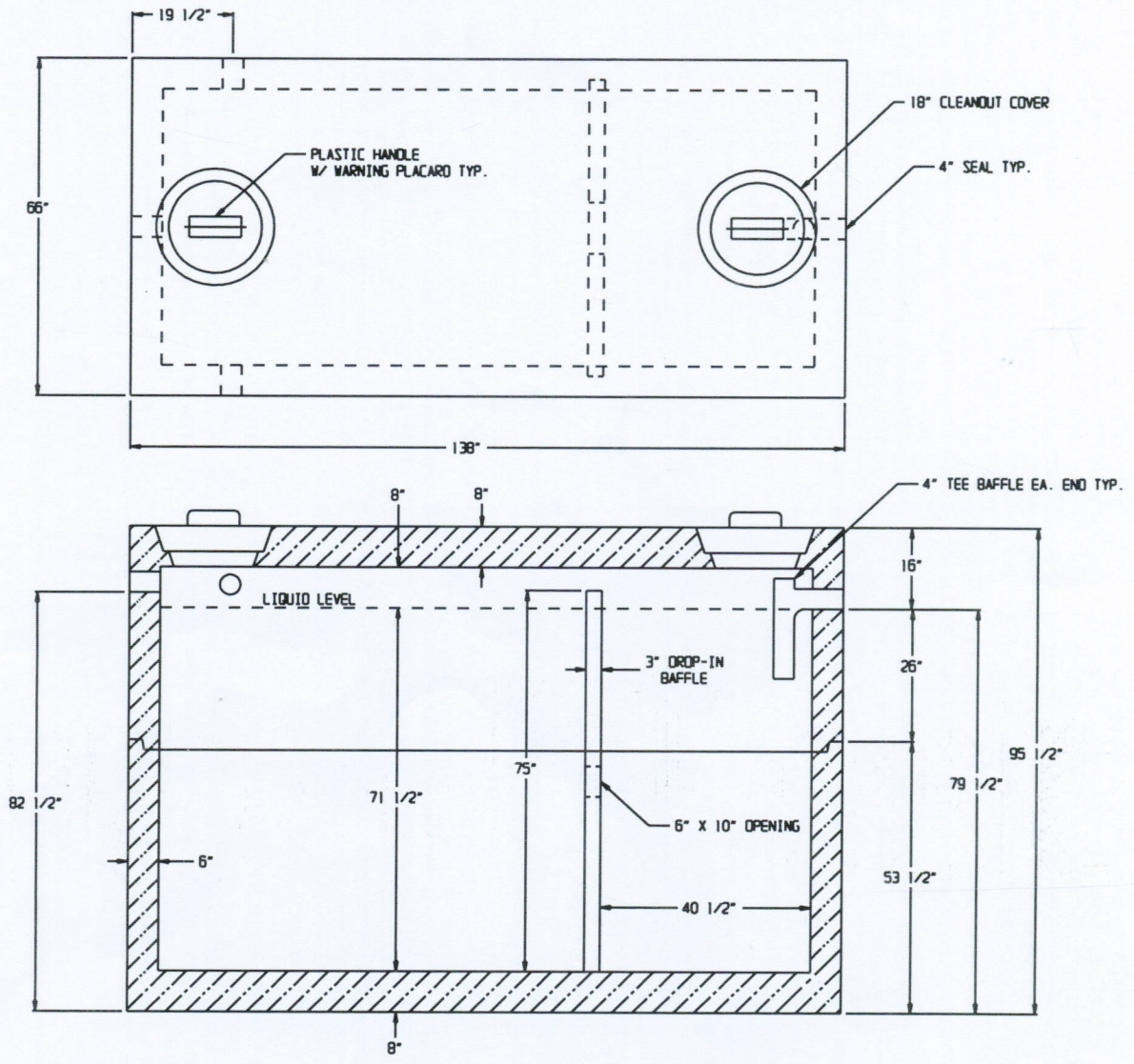


# 2000 H-20 2 COMPARTMENT SEPTIC TANK



## SPECIFICATIONS:

- \* Concrete Minimum Compressive Strength-5,000 P.S.I at 28 days.
- \* Materials & Manufacturing Per ASTM C-1227
- \* Steel Reinforcement:  
Welded Deformed Bars 4"x 4" D6.5/D6.5 (Gr.80) ASTM A-497, or equal
- \* Joint Sealed w/1" Butyl Mastic ASTM C-990.
- \* 4" Diameter Outlet Tee Equipped w/Gas Deflector or Effluent Filter.  
Length Adjustment By Others If Required By Code.
- \* 4" Pipe Seals: Rissy Plastics Mini Boot, or equal. Meets Pressure Requirements of ASTM C-923.
- \* Capacity @ Flow Line: 2,035 gallons
- \* 28.5 Gallons/ Inch of Rise
- \* Approximate Assembled Weight: Bottom= 14,300 lbs., Top=12,500 lbs.



2 COMMERCE DRIVE PO BOX 5133, BROOKFIELD, CT 06804  
 PHONE (203) 775-0230 FAX (203) 740-2059 WWW.EASTERNPRECAST.COM

|                    |  |               |        |
|--------------------|--|---------------|--------|
| PROJECT            |  |               |        |
| TITLE              |  |               |        |
| DRAWN BY BRETT B.  |  | DATE 05-23-05 |        |
| DWG. NO. 2000H20ST |  | SHEET 1 OF 1  | REV. A |